

SMART ELECTRICAL PANEL

Adding comfort is simplicity itself



→ CATALOGUE PAGES INSIDE

GLOBAL SPECIALIST IN ELECTRICAL AND DIGITAL
BUILDING INFRASTRUCTURES

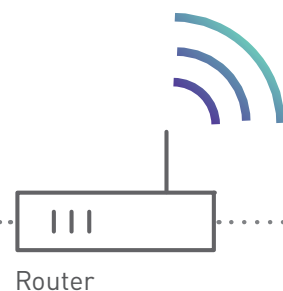
 **legrand**[®]

Principle of a Legrand connected installation

With our smart electrical panel solutions and the Home + Control app, you have the benefit of a complete system for controlling your electrical installation on any type of site, from private houses to large blocks of flats.



The Legrand Cloud hosts data, manages it and keeps it secure.



The Home + Control app can be used to control the installation remotely and stay informed.



RANGE OF MODULAR PRODUCTS FOR SMART ELECTRICAL PANELS:



EMDX³ with Netatmo Gateway Module
Cat.No 4 121 81

EMDX³ with Netatmo connected ecometer
Cat.No 4 120 33

OR

Interface: acts as a gateway between the router and Legrand connected products. For installation in the electrical panel or in a room in the house depending on the model chosen (any interface in the "with Netatmo" ranges).

Electrical panel equipped with connected modular products to control the lighting and high-energy consumption appliances, or track electrical energy consumption.

AND/OR

Connected products or packs available in the various Legrand wiring accessory ranges. For installation in different rooms in the house to control the lighting, roller shutters, the heating, etc.

EMDX³ with Netatmo single-phase connected electricity meter
Cat.No 4 120 15

EMDX³ with Netatmo connected load shedder
Cat.No 4 121 72

CX³ with Netatmo connected contactor
Cat.No 4 121 71

CX³ with Netatmo connected latching relay
Cat.No 4 121 70

CX³ with Netatmo connected starter pack:
1 Gateway Module + 1 connected contactor
Cat.No 4 121 91

An interface that is easy to wire up and install which integrates seamlessly into the electrical panel

EMDX³ WITH NETATMO CONTROL GATEWAY MODULE

To start a connected installation from the electrical panel, you simply need to install an EMDX³ with Netatmo Gateway Module.

EMDX³ WITH NETATMO GATEWAY MODULE:

- This is essential for any new installation and acts as an interface between the router and the connected wired products (2.4 GHz radio communication). Available as a modular version in the electrical panel, as wiring accessories or other versions in various rooms in the house.
- It is the equivalent of the gateway power outlet included in the Céliane™ with Netatmo connected starter pack (or available in the other wiring accessory ranges such as Arteor/Valena/Mosaic/Dooxie with Netatmo for example).
- Compatible with all other Legrand “with Netatmo” connected products.
- A single interface (gateway power outlet or Gateway Module) is enough to control the whole house.



Available separately (Cat.No 4 121 81) or in the connected starter pack (Cat.No 4 121 91) which also includes 1 CX³ with Netatmo connected contactor.



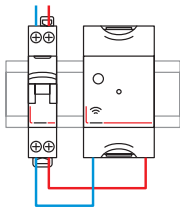
Cat.No 4 121 81



Cat.No 4 121 91

POWER SUPPLY: 100-240 V ~

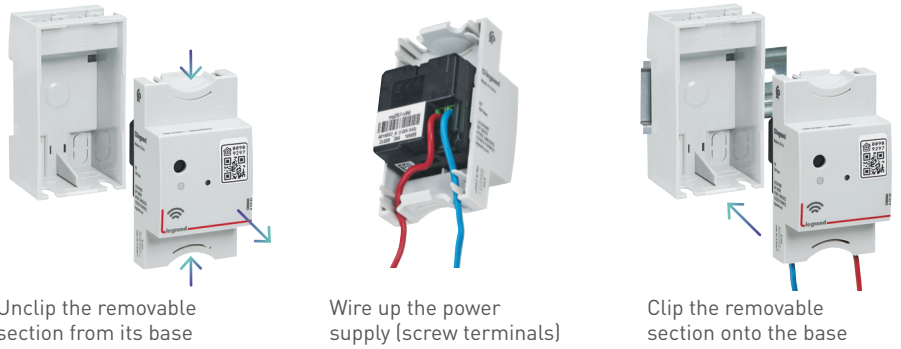
The Gateway Module is installed after a protective circuit breaker.



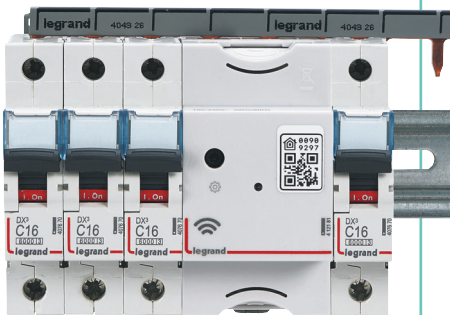
— N (neutral) = blue
 — L (phase) = everything except blue and green/yellow

WIRING

The Gateway Module consists of a fixed base and a removable section, to make wiring as easy as possible.



The product profile and positioning of the terminals allow the connection supply busbars to run along the top of the product. This means the position of the Gateway Module in the row can be chosen freely and products on the same rail can be connected via a supply busbar.



Track easily the energy consumption

EMDX³ WITH NETATMO CONNECTED ECOMETER

For installation in the electrical panel to measure the total installation consumption and that on a maximum of 5 other specific lines (if CIS connected), as well as gas, hot water and cold water consumption.

THE EMDX³ WITH NETATMO CONNECTED ECOMETER ALLOWS THE USER TO:

- Measure the total electricity consumption for the building and partial consumption on 5 specific lines such as: heating, air conditioning/cooling, domestic hot water, power outlets and other types of consumption (lighting or electric vehicle sockets for example).
- Monitor the consumption of gas, hot water and cold water (in m³) via pulse meters (formerly wired to the connected ecometer).
- Look up the consumption history (in kWh or Euros): on the daily/weekly/monthly/annual scale in the Home + Control app or offline on the device screen.



Available in the Connected ecometer pack (Cat.No 4 120 33) which also includes three 80 A closed measurement coils, Cat.No 4 120 08.

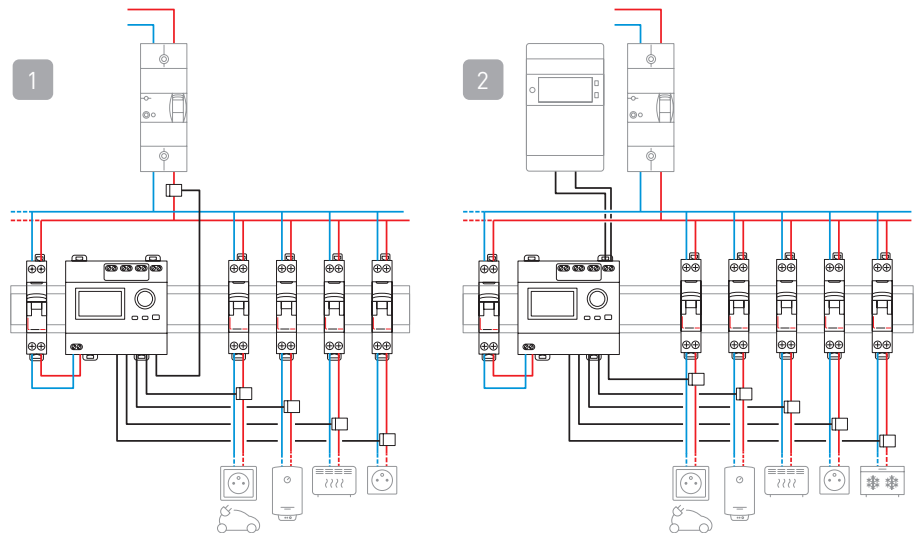


Cat.No 4 120 33



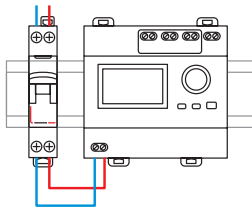
WIRING

- 1 **Installation without CIS (Customer Information System) connected**
The total consumption measurement will come from the coil connected to the "Total (5)" input
- 2 **Installation with CIS (Customer Information System) connected**
The total consumption will come from the CIS (to be connected). The coil connected to the "Total (5)" input will then be able to feed back consumption data from another circuit.

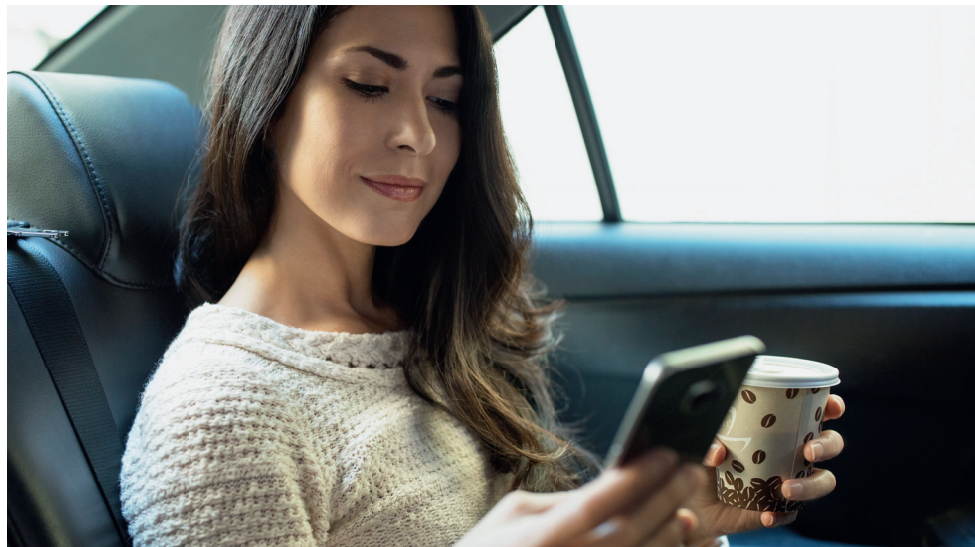


POWER SUPPLY: 100-240 V ~

The EMDX³ with Netatmo connected ecometer is installed after a protective circuit breaker.



- N (neutral) = blue
- L (phase) = everything except blue and green/yellow

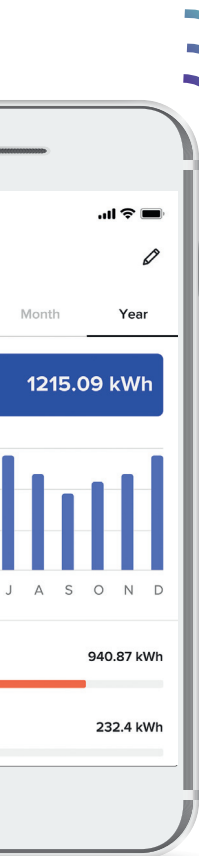


Can be used in offline mode (without an internet connection) or integrated in a connected installation and managed using the Home + Control app (without first needing to purchase the "with Netatmo" connected starter pack).

Track easily the energy consumption (continued)

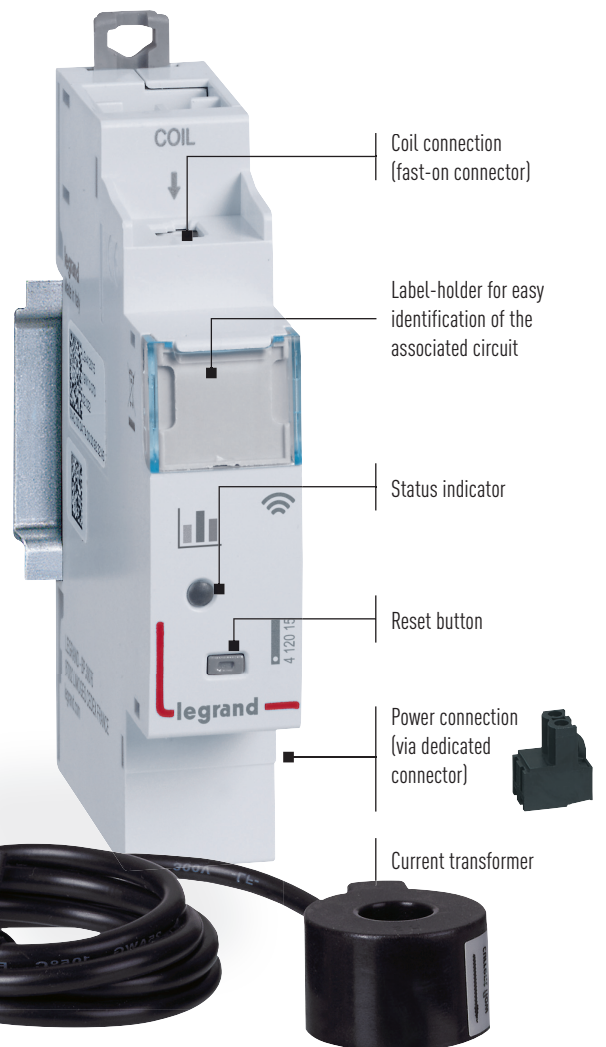
EMDX³ WITH NETATMO CONNECTED ELECTRICITY METER

For installation in the electrical panel to measure the total installation consumption or that of a specific line.



THE EMDX³ WITH NETATMO SINGLE-PHASE CONNECTED ELECTRICITY METER ALLOWS THE USER TO:

- View the total instantaneous power for the house or a specific line (heating, hot water, power outlets, etc).
 - Look up the total electricity consumption history on the daily/weekly/monthly/annual scale.
 - Send a notification if an adjustable total instantaneous power threshold is reached (energy meter configured in "total consumption track" mode).
-
- Install additional connected electricity meters, so as to obtain detailed measurement of the consumption of several circuits.
 - Supplied with 1 closed measurement coil 80 A max.



Width: 1 x 17.5 mm module



Requires prior installation of a "with Netatmo" connected starter pack, version for rail Cat.Nos 4 121 81/91 or Céliane/Arteor/Valena/Dooxie/Mosaic with Netatmo version.

WIRING

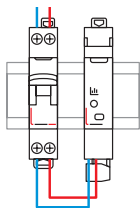
The connected electricity meter and the current transformer are connected via the quick-lock connector on top of the product (A).

The black removable connector on the underside of the connected electricity meter is used to plug in the power supply (B).



POWER SUPPLY: 100-240 V ~

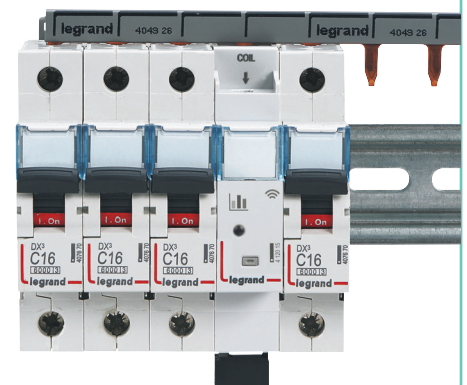
The connected electricity meter is installed after a protective circuit breaker.



— N (neutral) = blue
 — L (phase) = everything except blue and green/yellow



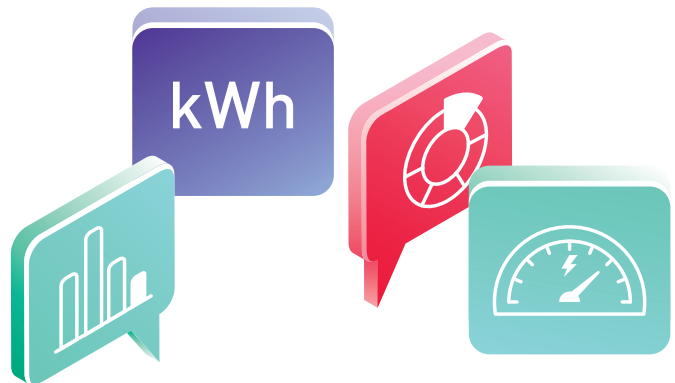
The product profile and positioning of the terminals allow the connection supply busbars to run along the top of the product. This means the position of the connected electricity meter in the row can be chosen freely and products on the same rail can be connected via a supply busbar.



Avoid untimely power failures in the event of excessive consumption

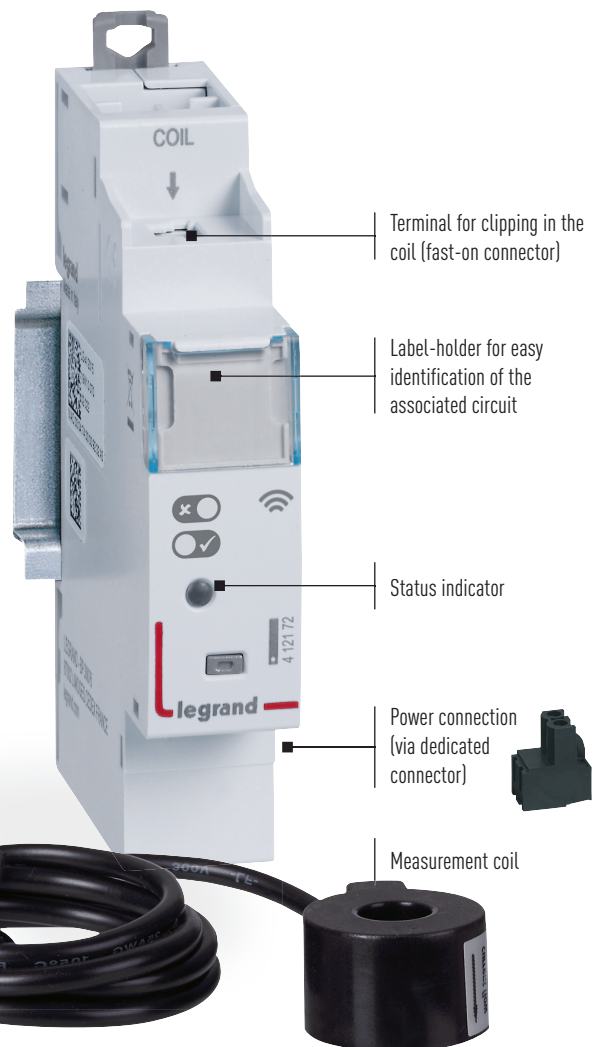
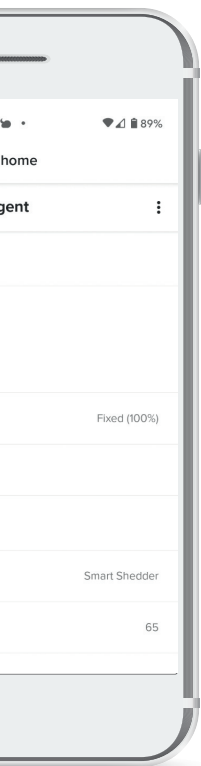
EMDX³ WITH NETATMO CONNECTED LOAD SHEDDER

For installation in the electrical panel to proactively switch off some of the most high-energy consumption appliances when the total consumption occasionally reaches a predefined threshold. It also avoids users having to sign up for an excessively expensive contract with their electricity supplier.



THE EMDX³ WITH NETATMO CONNECTED LOAD SHEDDER CAN:

- Measure and display the total electricity consumption for the building in real time.
- Gradually switch off, individually and automatically, the most high-energy consumption appliances (electric vehicle charging socket, water heater, heating, etc), supplied via connected socket outlets or cable outlets, or connected contactors, etc. if excessive consumption is detected in accordance with the priorities predefined in Legrand's Home + Control app.
- Automatically switch these appliances back on once the risk of excessive consumption has passed.
- Look up the total electricity consumption history for the building.
- Send a notification if associated appliances are switched OFF or ON.
- Supplied with 1 closed measurement coil 80 A max.



Requires prior installation of a "with Netatmo" connected starter pack, version for rail Cat.Nos 4 121 81/91 or Céliane/Arteor/Valena/Dooxie/Mosaic with Netatmo version.



Width: 1 x 17.5 mm module

WIRING

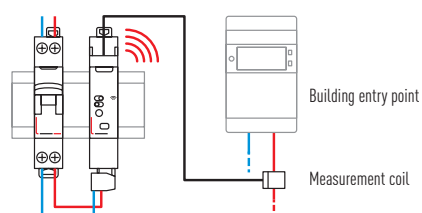
The connected load shedder and the coil are connected via the quick-lock connector on top of the product (A).

The black removable connector on the underside of the connected load shedder is used to plug in the power supply (B).



POWER SUPPLY: 100-240 V ~

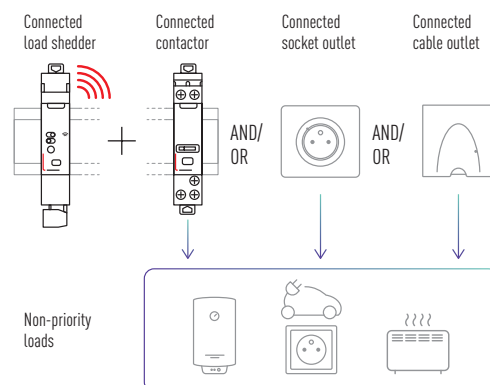
The connected load shedder is installed after a protective circuit breaker.



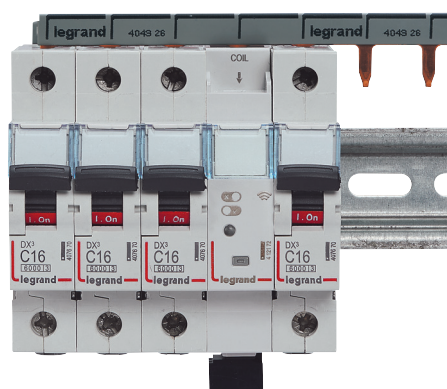
— N (neutral) = blue
— L (phase) = everything except blue and green/yellow

OPERATING PRINCIPLE

The load shedder function requires installation of at least one appliance from the “with Netatmo” ranges, with metering and control functions (connected contactor, connected socket outlet or cable outlet, etc) in addition to the load shedder.



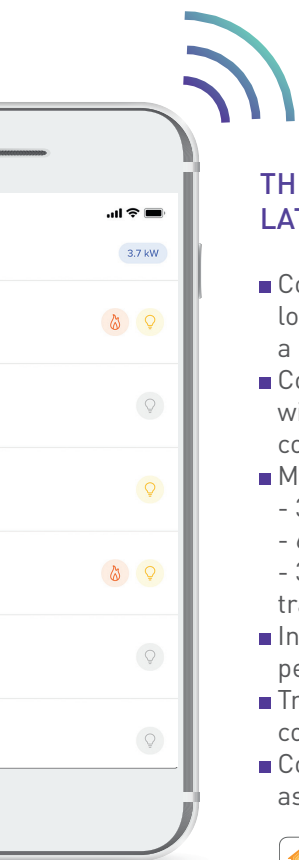
The product profile and positioning of the terminals allow the connection supply busbars to run along the top of the product. This means the position of the connected load shedder in the row can be chosen freely and products on the same rail can be connected via a supply busbar.



Control lights remotely without altering the installation

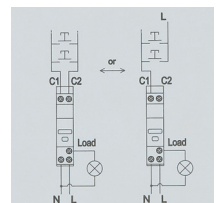
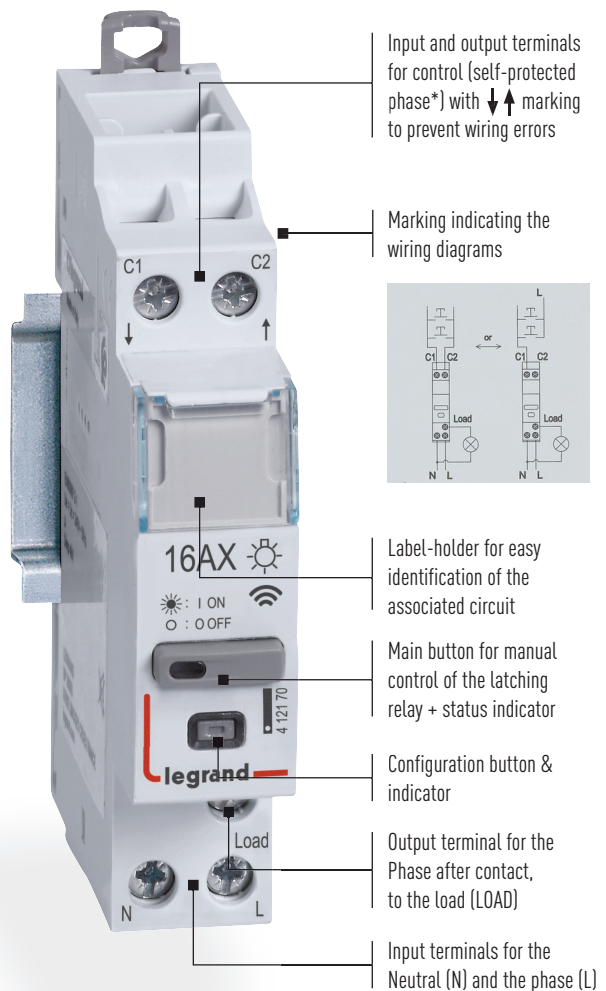
CX³ WITH NETATMO CONNECTED LATCHING RELAY

For installation in the electrical panel without the need for associated protection (no protective circuit breaker on the control circuit) when replacing an existing latching relay (refurbishment) or to create/complete a connected installation.



THE CX³ WITH NETATMO CONNECTED LATCHING RELAY ALLOWS THE USER TO:

- Control lights controlled by push-buttons locally or remotely (for example, lights in a corridor or stairwell).
- Combine it with wired push-buttons and/or wireless switches in Legrand "with Netatmo" connected ranges.
- Max. loads:
 - 3840 W incandescent and halogen lamps
 - 650 W LED and compact fluorescent lamps:
 - 3000 VA ferromagnetic and electronic transformers for lamps.
- Integrate lights in schedules or in personalised scenarios.
- Track consumption of the lighting circuit controlled in the Home + Control app.
- Control lights with their voice via a voice assistant.



Silent latching relay (< 10 dB)

Width: 1 x 17.5 mm module



Requires prior installation of a "with Netatmo" connected starter pack, version for rail Cat.Nos 4 121 81/91 or Céliane/Arteor/Valena/Dooxie/Mosaic with Netatmo version.

*Legrand patented technology

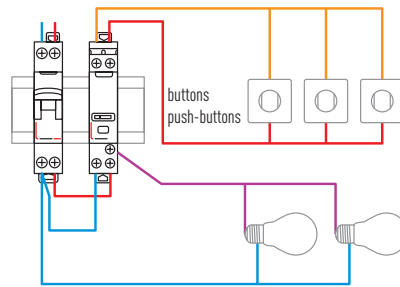
POWER SUPPLY: 100-240 V ~

The control circuit (upstream terminals) is self-protected. There is no need to install a dedicated 2 A protection (fuse or circuit breaker).

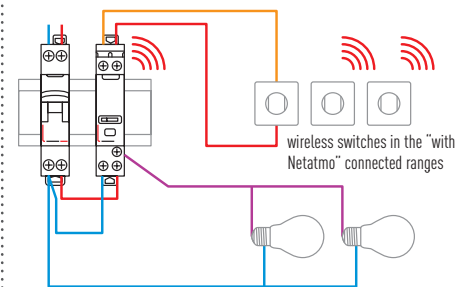
- N (neutral) = blue
- L (phase) = everything except blue and green/yellow
- Phase after contact = usually purple, orange, etc

WIRING EXAMPLES

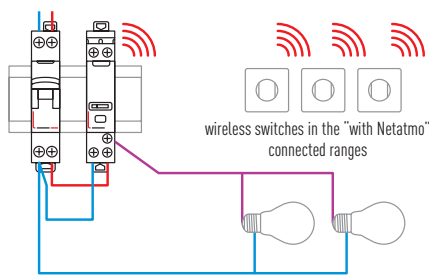
Installation with wired push-buttons (without illuminated indicator).



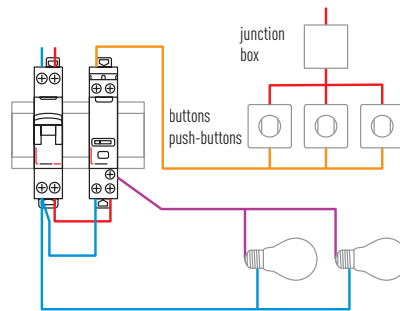
Mixed installation with wired push-buttons (without illuminated indicator) and "with Netatmo" wireless switches.



Wireless installation with several "with Netatmo" wireless switches.

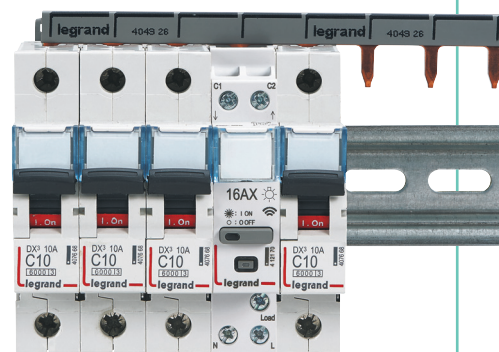


Wired installation with wired push-buttons (without illuminated indicator) and junction box.



The product profile and positioning of the terminals allow the connection supply busbars to run along the top of the product.

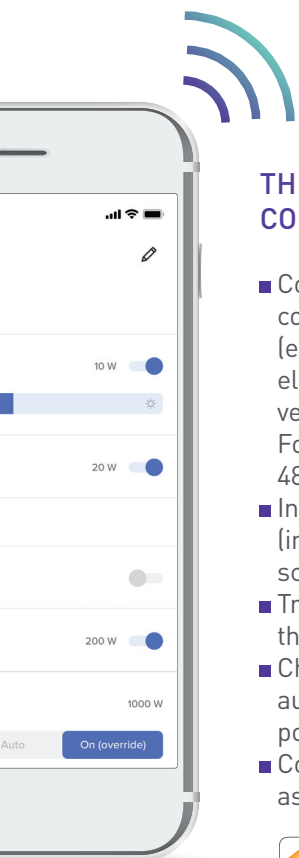
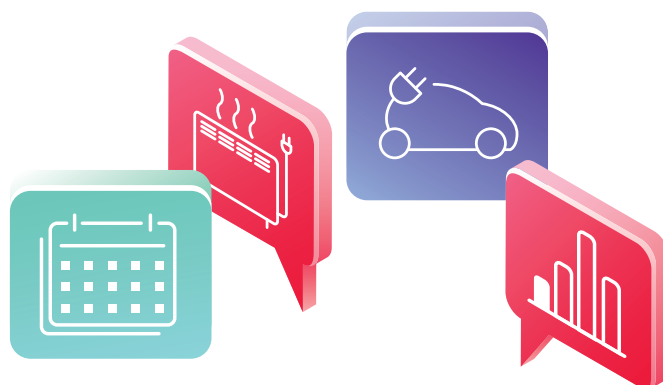
This means the position of the connected latching relay in the row can be chosen freely and products on the same rail can be connected via a supply busbar.



Control or schedule remotely the operation of high-energy consumption appliances

CX³ WITH NETATMO CONNECTED CONTACTOR

For installation in the electrical panel without the need for associated protection (no protective circuit breaker on the control circuit) when replacing an existing contactor or to create/complete a connected installation.

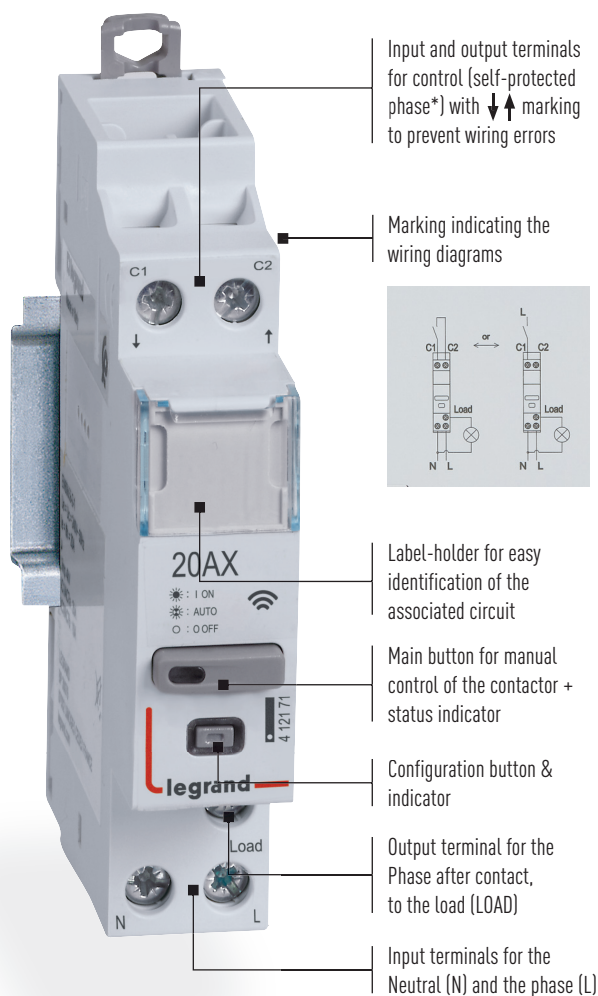


THE CX³ WITH NETATMO CONNECTED CONTACTOR ALLOWS THE USER TO:

- Control the operation of high-energy consumption appliances locally or remotely (electric water heater, swimming pool pump, electric heating, charging socket for an electric vehicle, etc).
For controlling electrical appliances up to 4800 W, or motors up to 2400 VA.
- Integrate controlled appliances in schedules (in place of a time switch) or in personalised scenarios.
- Track consumption of the circuit controlled in the Home + Control app.
- Choose between operation in peak/off-peak** automatic mode or as a conventional ON/OFF power contactor (via the Home + Control app).
- Control loads with their voice via a voice assistant.



Requires prior installation of a "with Netatmo" connected starter pack, version for rail Cat.Nos 4 121 81/91 or Céliane/Arteor/Valena/Dooxie/Mosaic with Netatmo version.



Silent contactor (< 10 dB)

Width: 1 x 17.5 mm module

* Legrand patented technology
 ** "Peak/Off-Peak" tariff (specific to France). The contactor is controlled by means of the signal sent by the electricity supplier, to supply the load only during time slots with a cheaper tariff.

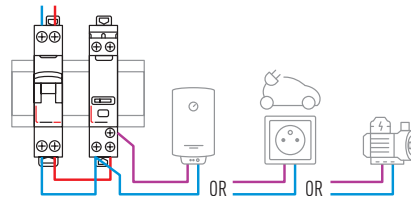
POWER SUPPLY: 100-240 V ~

The control circuit (upstream terminals) is self-protected. There is no need to install a dedicated 2 A protection (fuse or circuit breaker).

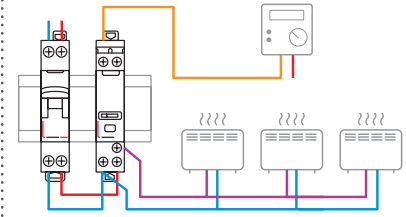
- N (neutral) = blue
- L (phase) = everything except blue and green/yellow
- Phase after contact = usually purple, orange, etc

WIRING EXAMPLES

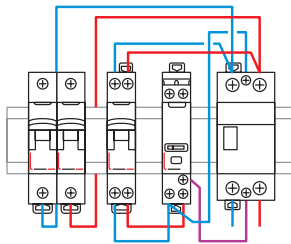
Control of different high-energy consumption loads.



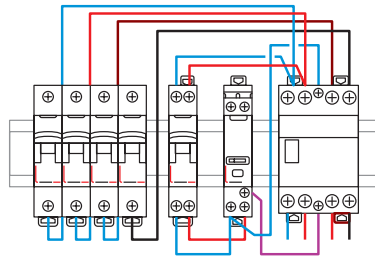
Control of an electric heating system via a central control unit.



Control of a single-phase or three-phase power contactor ($I_n > 20$ A) with a CX³ with Netatmo connected contactor.



Control of a single-phase power contactor with a CX³ with Netatmo connected contactor.

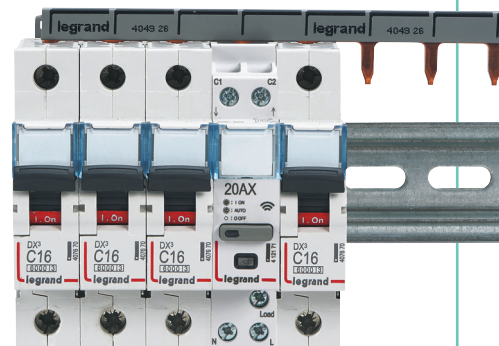


Control of a three-phase power contactor with a CX³ with Netatmo connected contactor.



The product profile and positioning of the terminals allow the connection supply busbars to run along the top of the product.

This means the position of the connected contactor in the row can be chosen freely and products on the same rail can be connected via a supply busbar.



Home + Control

just one app
to control everything

The installation is controlled and consumption tracked via the unique app: Home + Control.



The app can be used to control remotely using a smartphone and/or voice (via a voice assistant), the lights, roller shutters, heating and electrical appliances. It also gives users the option to personalise life scenes, schedule the operation of appliances, track consumption in detail and set alerts on a smartphone.



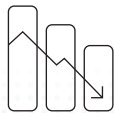
REMOTE CONTROL



VOICE CONTROL



EASE OF SCHEDULING



SMART ENERGY MANAGEMENT



The Home + Control app is completely free and available from the App Store and Google Play.



Smart electrical panel

connected starter packs



4 121 81



4 121 91



For technical characteristics, [see e-catalogue](#)

Allows the user to control an installation remotely using a smartphone via the Home + Control App, from Legrand and/or voice via a voice assistant. For any connected installation, you need to order either an EMDX³ with Netatmo Gateway Module, or a starter pack for connected installations including an interface (CX³ with Netatmo connected starter pack or available in the connected wiring accessory ranges: Arteur/ Céliane/Dooxie/Mosaic/Valena with Netatmo).

The installation can be supplemented by other products for smart electrical panel or available in the "with Netatmo" connected wiring accessory ranges. Products available from an Authorised Dealer. 2.4 GHz Wi-Fi connection required.

Pack	Cat.Nos	EMDX ³ with Netatmo Gateway Module
1	4 121 81	Can be used to create a connected installation. Connects the connected modules (electricity meter, latching relay, contactor) to the house Wi-Fi network. For installation in the electrical panel. Allows insertion of a supply busbar. 100 - 240 V~ - 50/60 Hz. Consumption: 2 W maximum. Connection via screw terminals. Width: 2.5 x 17.5 mm modules.

Pack	Cat.Nos	CX ³ with Netatmo connected starter pack
1	4 121 91	Can be used to start a connected installation. For installation in the electrical panel. Connects the connected modules to the house Wi-Fi network. Allows insertion of a supply busbar. Contents: - 1 Gateway Module Cat.No 4 121 81, 100 - 240 V~ - 50/60 Hz. Consumption: 2 W maximum. Width: 2.5 x 17.5 mm modules. - 1 connected contactor Cat.No 4 121 71, multifunction, silent (< 10 dB), 20 A, 100 - 240 V~ - 50/60 Hz. Connection via screw terminals. Width: 1 x 17.5 mm module.

Smart electrical panel

EMDX³ with Netatmo connected electricity meters



4 120 15



4 120 32



x 3



For technical characteristics, [see e-catalogue](#)

For any installation controlled remotely using a smartphone via the Home+ Control App, from Legrand and/or voice via a voice assistant. Products available from an Authorised Dealer.

Pack	Cat.Nos	EMDX ³ with Netatmo single-phase connected electricity meter
1	4 120 15	Requires prior installation of a "with Netatmo" connected starter pack, version for 1 rail. Cat.Nos 4 121 81/91 or Céliane, Dooxie, Mosaic, Valena or Arteur with Netatmo version. Allows the user to: - measure the total instantaneous power consumption of the house - track the daily/weekly/monthly/annual history of the total consumption of the house or circuit with which it is associated (in kWh and as a value) - send a notification if an adjustable threshold of total instantaneous power is reached. 100 - 240 V~ - 50/60 Hz. Supplied with 1 closed current transformer, 80 A max. Width: 1 x 17.5 mm module.

Pack	Cat.Nos	EMDX ³ with Netatmo connected ecometer
1	4 120 33	Allows the user to: - measure and display total and partial electricity consumption on 5 specific lines: heating, cooling, domestic hot water, socket outlets and other types of consumption in euro, kWh, or m ³ - monitor the consumption of gas, hot water and cold water via pulse meters (not supplied) - view the instantaneous consumption and history of each source offline (on the product screen) and remotely via the Legrand Home + Control App. Can operate independently or be integrated in an installation with a "with Netatmo" connected starter pack, version for 1 rail. Cat.Nos 4 121 81/91 or Céliane, Dooxie, Mosaic, Valena or Arteur with Netatmo version. Equipped with: - 1 Ethernet IP RJ 45 output and/or Wi-Fi connectivity for remote access via the Legrand Home + Control App. - 5 inputs for quick-connect current transformer (including 1 dedicated to total consumption) for measuring the electrical circuits - 1 CIS (Customer Information System) input for electronic meter, for managing tariff periods. Time slots can be entered by programming (if no CIS connected) - 3 pulse inputs (screw terminals) for measuring gas, cold water and hot water (to be connected to dedicated pulse meters, not supplied). Connection via screw terminals. Width: 5 x 17.5 mm modules.
1	4 120 08	Current transformer (closed coil), 80 A max. Quick, screwless connection.

Smart electrical panel - CX³ and EMDX³ with Netatmo connected contactor and load shedder



For technical characteristics, [see e-catalogue](#)

For any installation controlled remotely using a smartphone via the Home + Control App. from Legrand and/or voice via a voice assistant Products available from an Authorised Dealer

Pack	Cat.Nos	CX ³ with Netatmo connected contactor
1	4 121 71	<p>Requires prior installation of a "with Netatmo" connected starter pack, version for $\underline{\quad}$ rail Cat.Nos 4 121 81/91 or Arteor/Céliane/Dooxie/Mosaic/Valena with Netatmo version.</p> <p>Multifunction silent contactor (< 10 dB) 20 A, 100 - 240 V\sim - 50/60 Hz</p> <p>Conforming to standard IEC/EN 60669-2-1</p> <p>Can be used to control (ON/OFF) any type of load remotely (water heater, heating, swimming pool pump, charging socket for an electric vehicle, etc)</p> <p>Peak/off-peak function</p> <p>Allows the user via the Legrand Home + Control App. to:</p> <ul style="list-style-type: none"> - enter the contactor operating mode (peak/off-peak or ON/OFF) according to the nature of the load (water heater or other load) - measure and track consumption (kWh) of the controlled circuit - control another single or three-phase contactor > 20 A - directly control electrical appliances up to 4800 W, or motors up to 2400 VA, or sockets for electric vehicles up to 16 A VE <p>Self-protected upstream control terminals: no need for protection such as a 2 A circuit breaker or a fuse (remove this circuit breaker if already present when replacing a standard latching relay)</p> <p>Allows insertion of a supply busbar</p> <p>Screw terminals</p> <p>Width: 1 x 17.5 mm module</p>

1	4 121 72	<p>Requires prior installation of a "with Netatmo" connected starter pack, version for $\underline{\quad}$ rail Cat.Nos 4 121 81/91 or Arteor/Céliane/Dooxie/Mosaic/Valena with Netatmo version</p> <p>Allows the user to:</p> <ul style="list-style-type: none"> - measure the total electricity consumption for the building in real time - track daily/weekly/monthly/annual consumption history via the Legrand Home + Control App. - carry out intelligent load shedding if excessive consumption is detected: by switching off, individually and automatically, appliances powered via connected cable outlets, connected contactors, or connected socket outlets in the "with Netatmo" ranges - automatically switch these appliances back on once the consumption peak has passed - configure the load-shedding threshold (choice of subscribed demand or a maximum consumption threshold) and customise the load-shedding priority of each appliance from the Legrand Home + Control App. <p>Supplied with 1 measurement coil, 80 A max.</p> <p>Has space for inserting a supply busbar</p> <p>Screw terminals</p> <p>Width: 1 x 17.5 mm module</p>
---	----------	--

Smart electrical panel

CX³ with Netatmo connected latching relay



For technical characteristics, [see e-catalogue](#)





For any installation controlled remotely using a smartphone via the Home + Control App. from Legrand and/or voice via a voice assistant Products available from an Authorised Dealer

Pack	Cat.Nos	CX ³ with Netatmo connected latching relay
1	4 121 70	<p>Requires prior installation of a "with Netatmo" connected starter pack, version for $\underline{\quad}$ rail Cat.Nos 4 121 81/91 or Arteor/Céliane/Dooxie/Mosaic/Valena with Netatmo version</p> <p>Silent latching relay (< 10 dB) Single-pole, 16 A, 100 - 240 V\sim - 50/60 Hz</p> <p>Conforming to standard: IEC/EN 60669-2-1</p> <p>Allows the user via the Legrand Home + Control App. to:</p> <ul style="list-style-type: none"> - control devices remotely (one-off control or integrated in a scenario with one or more lighting points) - measure and track consumption (kWh) of the controlled circuit - program devices according to a daily and/or weekly schedule <p>Can be controlled by standard wired push-buttons and/or be combined with Arteor/Céliane/Dooxie/Mosaic/Valena with Netatmo connected wireless switches</p> <p>Self-protected upstream control terminals: no need for protection such as a 2 A circuit breaker or a fuse (remove this circuit breaker if already present when replacing a standard contactor)</p> <p>Allows insertion of a supply busbar</p> <p>Screw terminals</p> <p>Width: 1 x 17.5 mm module</p>

In accordance with its policy of continual improvement, the company reserves the right to modify the characteristics and design of its products without warning. All illustrations, descriptions, dimensions, and weights indicated in this catalogue are given as a guide only and the company cannot be held liable for their accuracy



FOLLOW US ON

- @ www.legrandgroup.com
-  youtube.com/user/legrand
-  facebook.com/Legrand
-  twitter.com/Legrand
-  pinterest.com/legrandgroup
-  instagram.com/legrandnews



Head Office
and International Department
87045 Limoges Cedex - France
Tel: +33(0)5 55 06 87 87
Fax: +33(0)5 55 06 74 55